



ORBIT HOMES

H&L PACKAGE



22sq



\$1,006,547

Caulfield 23 (NOVA)

Lot 559, Rosella Road
The Dunes , Torquay

Land Size: 420m²

Inclusions:

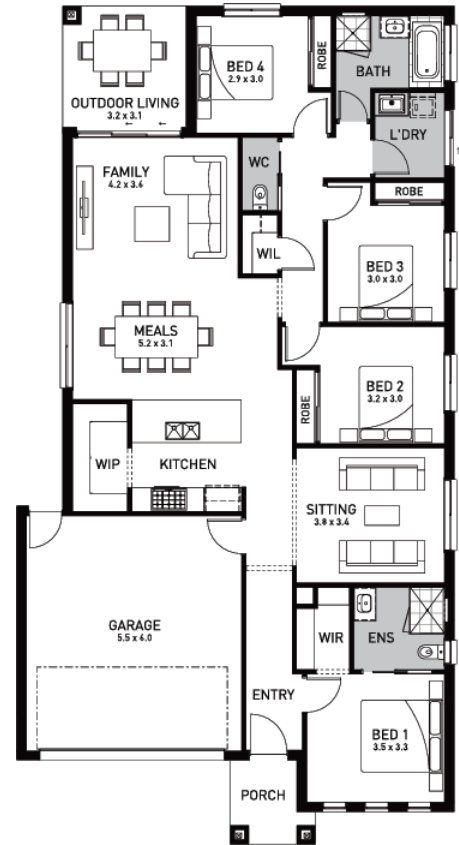
- Electrify Your Home - Fully ducted reverse cycle
- heating/cooling system including Izone Nova controller SMEG
- induction cooktop
- Prestige Collection inclusions (2026)
- 7 Star energy rating + Solar PV system
- Fixed Price Site Costs, Developer & Council Requireme
- Alarm, CCTV system & Video Doorbell
- Double Glazed Windows + Doors
- 2700mm High Ceilings + 2340mm high doors througho
- Butlers Pantry with Sink
- Downlights Throughout + Floor to ceiling tiles to Ensuite
- SMEG Kitchen Appliances & Dishwasher
- Quality Floor Coverings throughout
- Driveway Included



Contact James Hill

E james.hill@orbithomes.com.au

M 0458 588 078



Orbit Homes Australia Pty Ltd • CDB-U 50505 • Orbit Homes Queensland Pty Ltd QBSA LIC 716019 • Facade illustrations are used as a guide only, excludes upgrades such as but not limited to feature stone and tiles, Refer to façade guide for standard inclusions. Images used are for visual purposes only. Upgraded fixtures, fittings and design items may be shown, these can be selected at additional costs, please refer to a Sales Consultant for further information or to upgrades book for optional extras. Any allowances included for fencing and landscaping are to be completed by customer after handover. Customer connection fees to power and telephone not included. Prices subject to change without notice. Not to be used with any other offer. Progress payments on construction. Excludes stamp duty and costs. House and land package total price may include developer incentives & rebates and any builder referral fees at the time of issue. Developer incentives & rebates and any builder referral fees may be withdrawn at any time to the discretion of the land developer.



Land price = \$595,000 | Date created 05/03/2026 | Valid for 60 days.

ORBIT HOMES DISPLAY CENTRE

COASTAL RISE ESTATE

Mount Duneed, Victoria



Live your dream

